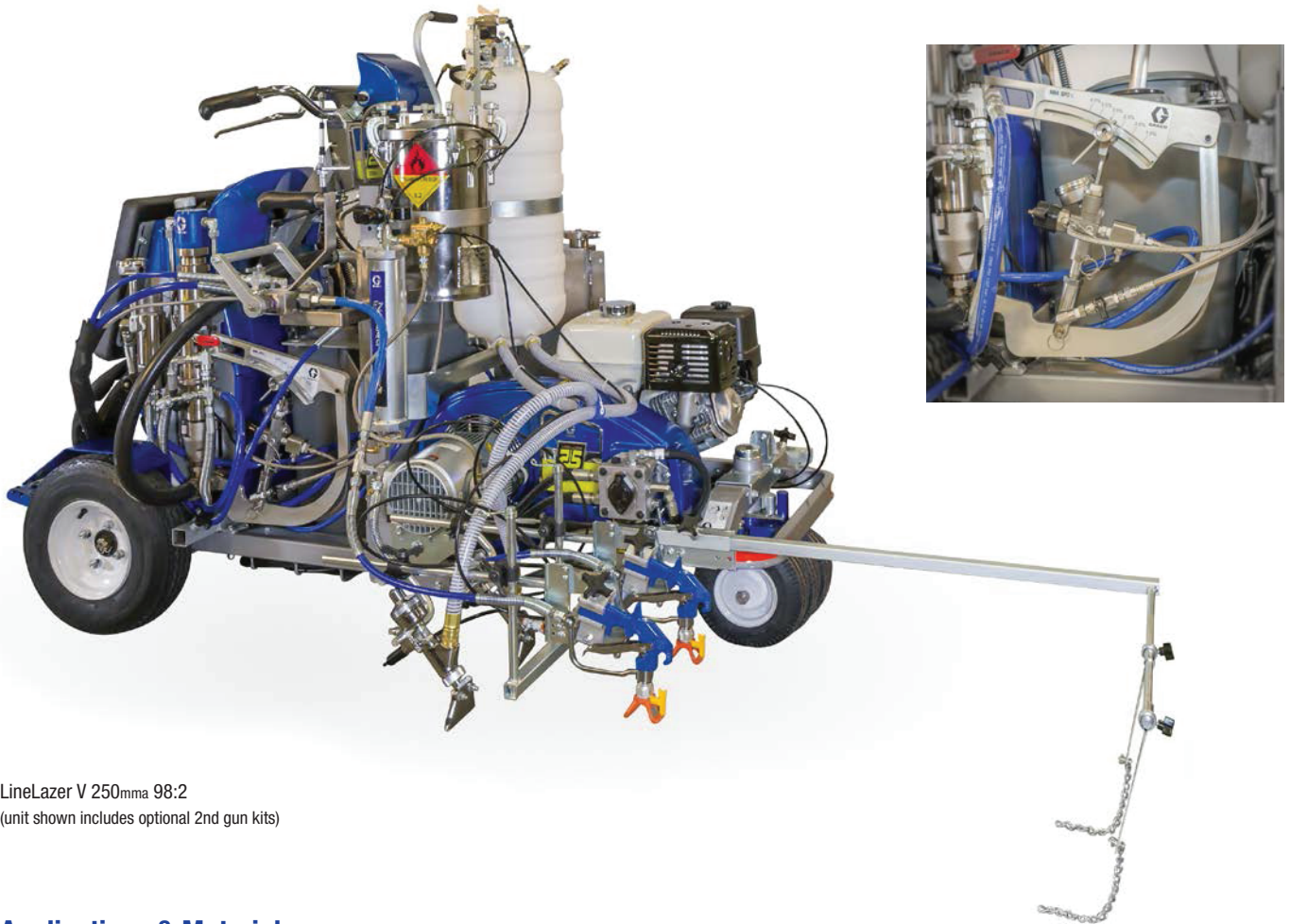


# LineLazer™ V 250 mma 98:2

Hydraulic Ride-On 2-Component Striper



LineLazer V 250mma 98:2  
(unit shown includes optional 2nd gun kits)

## ► Applications & Materials

Spraying 2-component 98:2 road markings has never been more reliable with LineLazer V 250mma 98:2.

Based upon the LineLazer V 250 range, this unit provides it all: built in 98:2 mixing capabilities and Ratio Assurance, on-board storage tanks and solvent flushing capabilities.

## ► Features & Benefits

### Automatic Gun Control System

- Manual or automatic paint guns with the push of a button

### Exclusive Stand-On Platform

- Integrated platform provides an ergonomic place for standing, great view and all-day comfort

### Self-Centering Front Wheel

- Eliminates one user interface for simpler operation
- Foam filled for stability

### EasyMark Gun Adjustment System

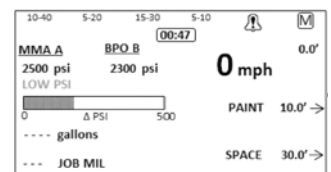
- Simple guide mark system
- Easy gun on/off, front/back
- Perfect gun set up – every time

### Pressurized Bead System

- Installed and ready to go

### Exclusive 98:2 Mixing System

- On-Board storage tanks for MMA, BPO and solvent
- Exclusive hard-connect MMA and BPO pump design
- Mix-manifold
- Integrated mix hose for consistency in material mixing
- Ratio Assurance system



Ratio Assurance System

See page 37 for more detail